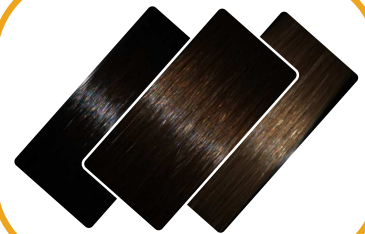


SAMBA HAIR

Hair Shine Analysis for Claims & Research



Parallel & Crossed
Polarization Imaging



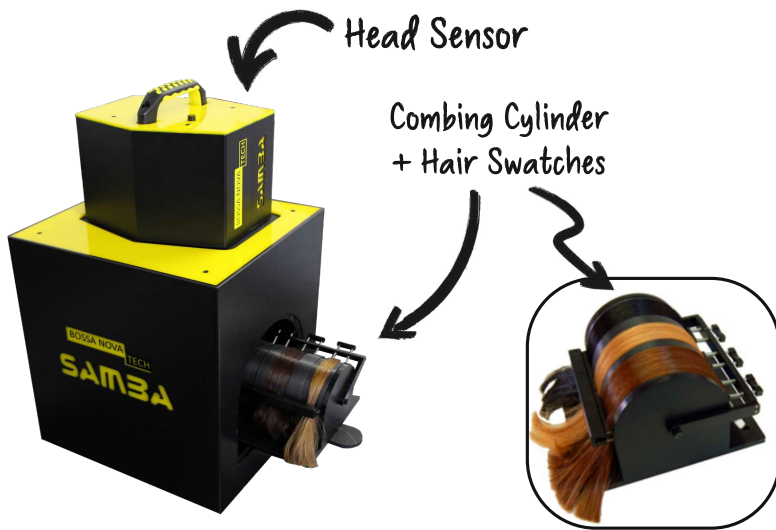
In-Vivo & In-Vitro
Measurements



Claims Compliant
Hair Shine metrics



Increase in hair shine may be one of the most sought-after properties in the hair care industry, whether it be for shampoo, conditioner, oils or hair sprays. However, correctly quantifying such a subjective parameter is not easy.



The **SAMBA HAIR System** uses polarization-imaging to separate the different components of light that are reflected from hair swatches and extract **valuable data for research and claims of luster properties of hair**. The system includes an imaging sensor head and an in-vitro enclosure. The hair samples are positioned on a cylindrical combing mount that slides inside the instrument.

SPECIFICATIONS

VISION	SAMBA Color Camera 12-bits depth 780 x 580 px ² resolution White LED Illumination bar
HAIR SWATCH	Any color Straight Hair that can be combed 0.5" to 1" (12.5 to 25 mm) wide 7" (180 mm) long
SOFTWARE	SAMBA HAIR 3.0 or higher
ACQUISITION	Measurement time < 10 sec Parallel & Crossed Color Images
DATA	Luster coefficients (BNT, Reich-Robbins, TRI) Shine / Chroma / Diffuse Angular distribution Raw / Specular / Diffuse Images Excel Export
SYSTEM	Size : 14" x 22"x 14" (36 cm x 56 cm x 36 cm) 110/200 VAC 50/60 Hz

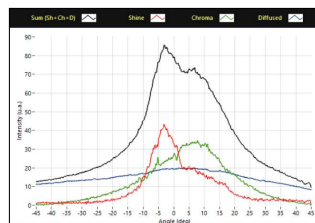
SAMBA HAIR SOFTWARE

Using our polarization imaging system, the SAMBA Hair software can reconstruct the specular and diffusion images of your hair swatches.

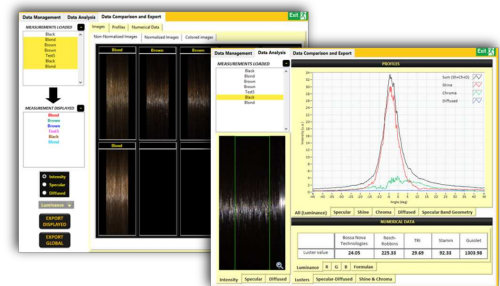
After processing, luster coefficients used for claims in the cosmetics industry as well as more extensive data (angular distribution of intensity, shine band parameters, etc.) are provided.



Specular and Diffusion images separation



Angular distribution
Shine / Chroma / Diffusion



With the SAMBA HAIR Software, you can easily :

- Acquire your images with a simple organization system for your studies
- Get luster coefficients widely used for claims in the cosmetic industry
- Compare images and numerical data of multiple samples
- Export all your data including images, graphs and tables